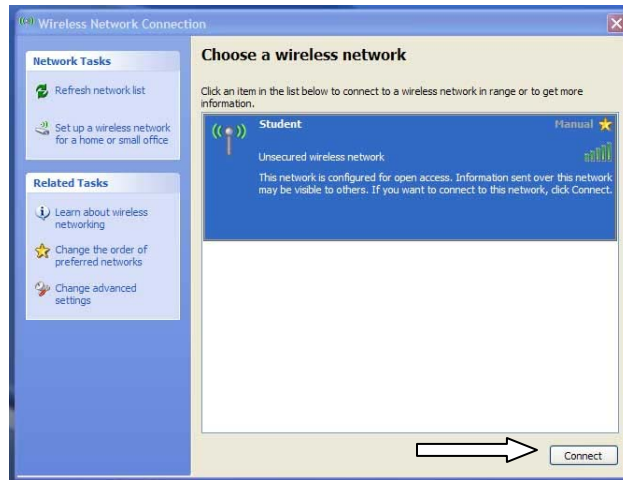


# Using the Chaffey Wireless Network

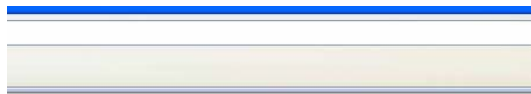
## *Detailed Instructions*

1. Start your computer device, and bring up your wireless connection. Although systems vary, and we can not tell you exactly how do this, a laptop running Windows XP might look like the following image.

If this is the case, click on the **Connect** button.



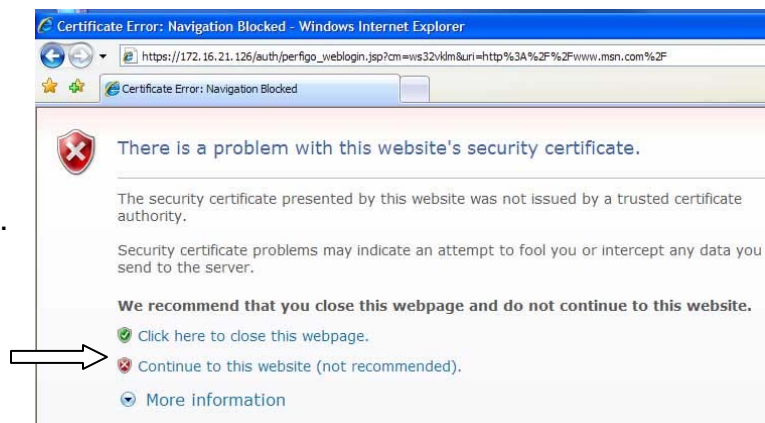
2. Once you are connected, open a browser window, such as Internet Explorer or Firefox. If your browser is not configured to automatically bring up a page, go to <http://www.chaffey.edu>.



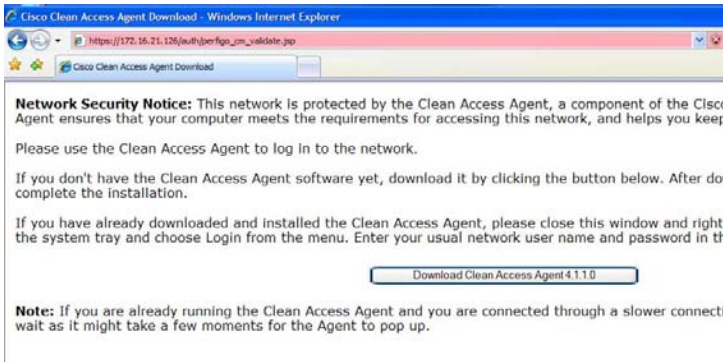
You are being redirected to the network authentication page.  
If you are not redirected automatically, then please click [HERE](#).

3. You will then be taken to the first page of the login process.

4. At this point, some Microsoft products will present a security certificate screen. If this page appears, click on the line that says **Continue to this website**.



5. A prompt to download **Clean Access Agent** will appear. This software will make the login processes easier the next time you connect to the Chaffey Wireless network. (This screen may not be seen if you are using a PDA, cell phone, or Apple Macintosh computer.) Click on the button to download.



**Note:** You *cannot* bypass this download. The download will check to see if you have an appropriate device, operating system, and virus checking software before your device is allowed to connect the network. **If you choose not to install this software, you may be denied access to the network.**

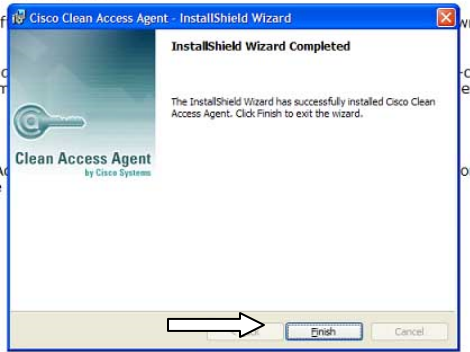
6. A login prompt will then appear. Your seven-digit Chaffey ID number is your username. Your password is your birth date in six-digit format: MMDDYY. Type in your login information, then click **Continue**.



7. Click the **Run** button on the gray pop-up window that appears. **Note:** Do *not* click Save.

8. You may get the following message on Microsoft Windows products. Click the **Run** button.





9. Click the appropriate buttons to let the software install. Click the **Finish** button on the last installation page.

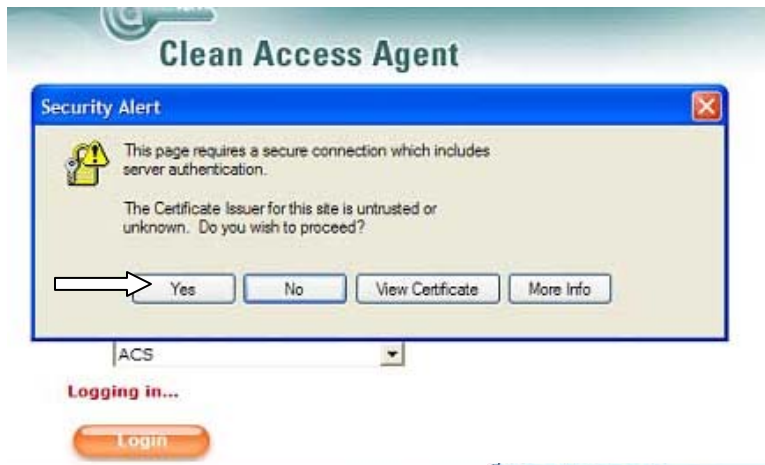
10. You will be presented with the Clean Access login prompt. Type in your Chaffey ID number in the **Username** box and your birth date in six-digit format in the **Password** box. Click the Login button.



11. If you receive the following dialog box, you will need to upgrade your version of **Clean Access Agent**. Click **OK**.

12. A new version of **Clean Access Agent** will then be downloaded to your device.





**13.** If the following security message appears, click the Yes button.

**14.** Congratulations! You are connected to the Chaffey Wireless Network. You may now connect to the Internet using applications on your computing device.

